



Temporary Abutment



Prep Temporary Abutment



Design Provisional Crown



Screw in Provisional Crown



Unscrew Provisional Crown



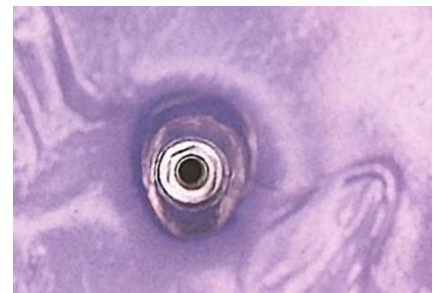
Attach Analog to Provisional



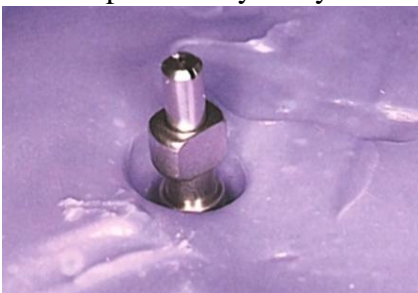
Fill cup w/ Heavy Body



Insert Crown and Analog



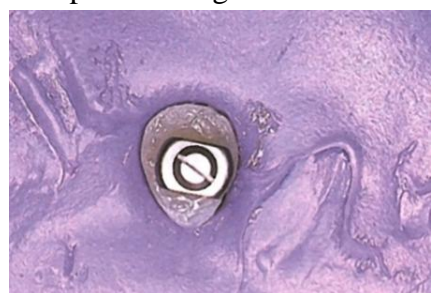
Capture Emergence Profile



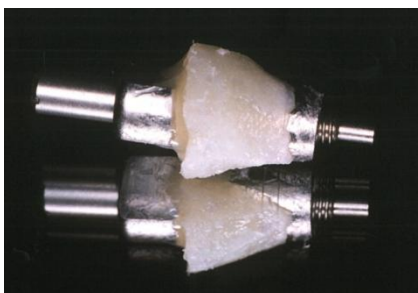
Screw in Impression Coping



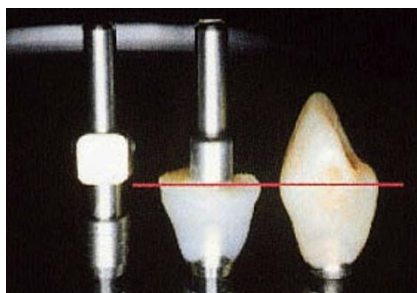
Fill emergence with composite



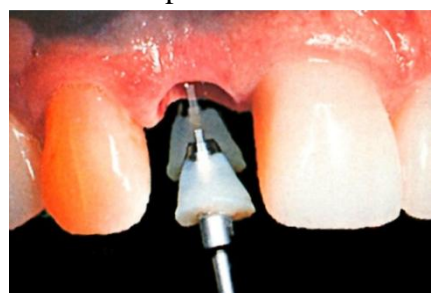
Polish composite



Unscrew Impression Coping



Emergence profile matches



Insert custom impression coping



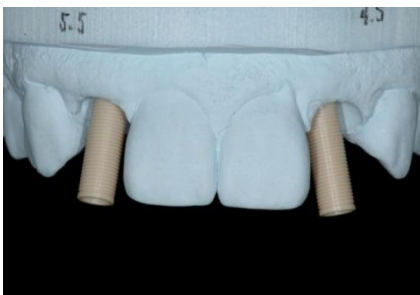
Seat impression coping



Take Impression/Attach Replica



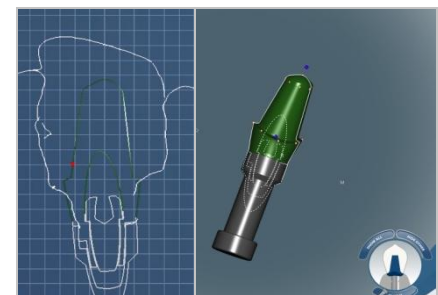
Pour up Master Model



Attach Wax-up Sleeve



Wax-up Custom Abutment



Design CAD/CAM Abutment



Precision-Milled Abutment



Screw in Abutment to Model



Design CAD/CAM Crown



Torque Final Abutment 35Ncm



Cement Crown



NOTE: The use of new implant replicas and impression copings are recommended. If non-new implant replicas or impression copings are used, it is necessary to inspect under loupes/microscope for damage (scratches, defects or any other foreign material on the surface). Worn or damaged implant replicas or impression copings will result in improper seating of impression coping and thus the accuracy and precision milling of the custom abutment.