

Multi-unit Abutment Placement and impression techniques

CLOSED TRAY AND OPEN TRAY QUICK GUIDE

Abutment placement instructions

Step 1

- Remove the Healing Abutment using the Screwdriver Unigrip and by rotating it counterclockwise.

Step 2a – Straight Multi-unit Abutment

- Use the premounted plastic holder to place the abutment onto the implant and screw the abutment into the correct position. If necessary, shorten the holder with a pair of scissors. When the abutment is seated, remove the plastic holder with a slight bending movement and hand-tighten with Screwdriver Machine Multi-unit.

Step 2b – Straight Multi-unit Abutment

- Take a radiograph to verify proper seating of the abutment (radiograph for conical connection is shown). Tighten the abutment screw to 35 Ncm using the Manual Torque Wrench Prosthetic and Screwdriver Machine Multi-unit.

Or

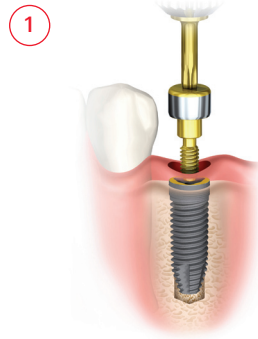
Step 2a – Angled Multi-unit Abutment, 17° or 30°

- The abutment is placed over the implant by using the premounted abutment holder. Please note that there are several possible positions in which to place the abutment based on the implant connection and abutment angle.
- Tighten the abutment screw using a Screwdriver Unigrip until resistance is felt. The holder is then unscrewed from the abutment by turning it counterclockwise.

Step 2b – Angled Multi-unit Abutment, 17° or 30°

- Take a radiograph to verify proper seating of the abutment (radiograph for conical connection is shown). Tighten the abutment screw to 15 Ncm using the Manual Torque Wrench Prosthetic and Screwdriver Machine Unigrip. Be sure not to exceed 15 Ncm.

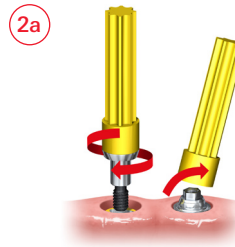
See closed or open tray instructions for next steps.



This Quick Guide does not replace the Instructions for Use. Please review the instructions for use included with the products.

Indications:

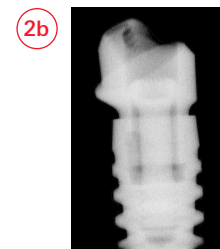
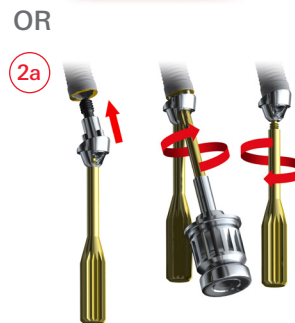
- Multi-unit restorations
- Screw-retained
- May be used in combination with framework design if not all implants benefit from abutments.
- Used to elevate seating restoration platform when restoration-to-implant level is not practical nor indicated due to depth or angle of implant.



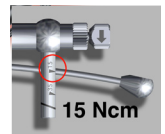
Conical connection



35 Ncm



Conical connection



15 Ncm

Closed tray – Abutment level impression instructions

Step 3

- Connect the Impression Coping Closed Tray Multi-unit to the abutment by rotating it clockwise.

Step 4

- Inject a heavy body impression material (polyether material or polyvinylsiloxane) around the impression coping. Fill the tray with impression material and record the impression.

Step 5

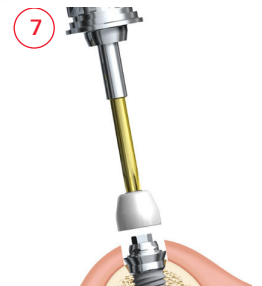
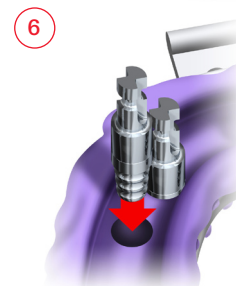
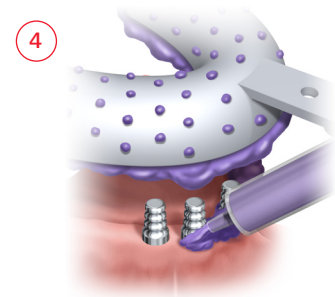
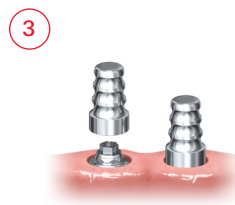
- After setting, remove the impression and disconnect the impression copings. Attach an Abutment Replica Multi-unit to each impression coping.

Step 6

- Place the impression coping abutment replica assembly into its corresponding location in the impression.

Step 7

- Connect the temporary restoration or healing cap. Send the impression to the dental laboratory.



Open tray – Abutment level impression instructions

Step 3

- Connect the Impression Coping Open Tray Multi-unit on the abutment and tighten using the Screwdriver Unigrip.
- Relieve and perforate the impression tray to allow full seating of the tray and protrusion of the guide pins. If there is a large opening, it may be closed off using baseplate wax, with the guide pins indenting or perforating the wax.

Step 4

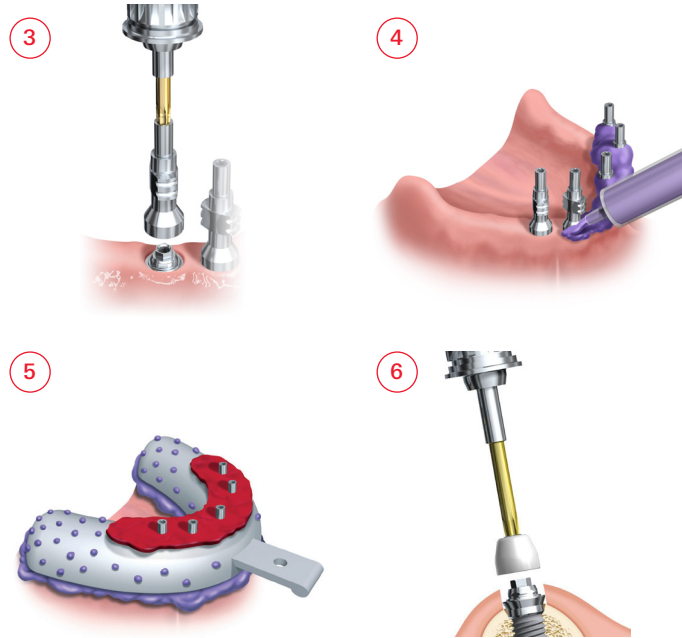
- Inject a heavy body impression material (polyether material or polyvinylsiloxane) around the impression coping.
- Fill the tray with impression material and seat the impression tray fully so that the tips of all the guide pins are identified.
- Remove excess impression material from the guide pin access holes.

Step 5

- After setting, unscrew the guide pins and remove the impression tray and send to the dental laboratory, including the guide pins. For model fabrication, corresponding implant replicas should be provided by you or your dental laboratory.

Step 6

- Connect the temporary restoration or healing cap.



Materials to use for Multi-unit Abutment placement and closed or open tray impression techniques

Description	Item number
NobelReplace® Multi-unit Abutment (internal tri-channel connection)	
17° Multi-unit Abut NobelReplace NP 2 mm	29235
17° Multi-unit Abut NobelReplace NP 3 mm	29236
17° Multi-unit Abut NobelReplace RP 2 mm	29237
17° Multi-unit Abut NobelReplace RP 3 mm	29238
17° Multi-unit Abut NobelReplace RP 4 mm	29239
30° Multi-unit Abut NobelReplace RP 4 mm	29240
30° Multi-unit Abut NobelReplace RP 5 mm	29241
30° Multi-unit Abut Non-Engaging NobRpl RP 4 mm	33409
30° Multi-unit Abut Non-Engaging NobRpl RP 5 mm	33410
Multi-unit Abut NobelReplace NP 1 mm	29196
Multi-unit Abut NobelReplace NP 2 mm	29197
Multi-unit Abut NobelReplace NP 3 mm	29198
Multi-unit Abut NobelReplace RP 1 mm	29199
Multi-unit Abut NobelReplace RP 2 mm	29200
Multi-unit Abut NobelReplace RP 3 mm	29201
Multi-unit Abut NobelReplace RP 4 mm	29202
Multi-unit Abut NobelReplace RP 5 mm	29203
Multi-unit Abut NobelReplace WP 1 mm	29204
Multi-unit Abut NobelReplace WP 2 mm	29205
Multi-unit Abut NobelReplace WP 3 mm	29206
Conical Connection Multi-unit Abutment (internal conical connection)	
17° Multi-unit Abut CC NP 2.5 mm	36614
17° Multi-unit Abut CC NP 3.5 mm	36615
17° Multi-unit Abut CC RP 2.5 mm	36618
17° Multi-unit Abut CC RP 3.5 mm	36619
30° Multi-unit Abut CC NP 3.5 mm	36620
30° Multi-unit Abut CC NP 4.5 mm	36621
30° Multi-unit Abut CC RP 3.5 mm	36622
30° Multi-unit Abut CC RP 4.5 mm	36623
Multi-unit Abut CC NP 1.5 mm	36611
Multi-unit Abut CC NP 2.5 mm	36613
Multi-unit Abut CC NP 3.5 mm	36624
Multi-unit Abut CC RP 1.5 mm	36616
Multi-unit Abut CC RP 2.5 mm	36617
Multi-unit Abut CC RP 3.5 mm	36625
Multi-unit Abut CC RP 4.5 mm	36626

Description	Item number
Brånemark System® Multi-unit Abutment (external hex connection)	
17° Multi-unit Abutment Brånemark System NP 2 mm	29187
17° Multi-unit Abutment Brånemark System NP 3 mm	29188
17° Multi-unit Abutment Brånemark System RP 2 mm	29189
17° Multi-unit Abutment Brånemark System RP 3 mm	29190
17° Multi-unit Abutment Brånemark System RP 4 mm	29191
30° Multi-unit Abutment Brånemark System RP 4 mm	29192
30° Multi-unit Abutment Brånemark System RP 5 mm	29193
30° Multi-unit Abut Non-Engaging Bmk Syst RP 4 mm	33411
30° Multi-unit Abut Non-Engaging Bmk Syst RP 5 mm	33412
Multi-unit Abutment Brånemark System NP 1 mm	29176
Multi-unit Abutment Brånemark System NP 2 mm	29177
Multi-unit Abutment Brånemark System NP 3 mm	29178
Multi-unit Abutment Brånemark System RP 1 mm	29179
Multi-unit Abutment Brånemark System RP 2 mm	29180
Multi-unit Abutment Brånemark System RP 3 mm	29181
Multi-unit Abutment Brånemark System RP 4 mm	29182
Multi-unit Abutment Brånemark System RP 5 mm	29183
Multi-unit Abutment Brånemark System WP 1 mm	29184
Multi-unit Abutment Brånemark System WP 2 mm	29185
Multi-unit Abutment Brånemark System WP 3 mm	29186
Instruments	
Screwdriver Manual Unigrip 20 mm	29148
Screwdriver Manual Unigrip 28 mm	29149
Screwdriver Manual Unigrip 36 mm	29150
Screwdriver Machine Multi-unit 21 mm	29158
Screwdriver Machine Multi-unit Bmk Syst WP 20 mm	29159
Screwdriver Machine Unigrip 20 mm	29151
Screwdriver Machine Unigrip 25 mm	29152
Screwdriver Machine Unigrip 30 mm	29153
Screwdriver Machine Unigrip 35 mm	29154
Manual Torque Wrench Prosthetic	29165
Components	
Impression Coping Closed Tray Multi-unit	29090
Impression Coping Closed Tray Multi-unit Bmk Syst WP	29092
Impression Coping Open Tray Multi-unit	29089
Impression Coping Open Tray Multi-unit Bmk Syst WP	29091
Abutment Replica Multi-unit	31161
Abutment Replica Multi-unit Bmk Syst WP	31162
Healing Cap Multi-unit	31145
Healing Cap Multi-unit Bmk Syst WP	29066
Healing Cap Wide Multi-unit	31146
Healing Cap Wide Multi-unit Bmk Syst WP	29067
Temporary Coping Multi-unit	29046
Temporary Coping Multi-unit Bmk Syst WP	29047
Temporary Coping Plastic Multi-unit	DCA 468-0
Temporary Coping Plastic Multi-unit	DCA 705-0

Product images are not necessarily to scale.

In order to improve readability, Nobel Biocare does not use TM/® in running text. In so doing, however, Nobel Biocare does not waive any right to the trademark or registered mark and nothing herein shall be construed to the contrary.

Nobel Biocare USA, LLC. 22715 Savi Ranch Parkway, Yorba Linda, CA 92887
Phone 714 282 4800; Toll free 800 322 5001; Technical services 888 725 7100

©2011 Nobel Biocare USA, LLC. All rights reserved. www.nobelbiocare.com 72194 Rev. 01 (08/11)