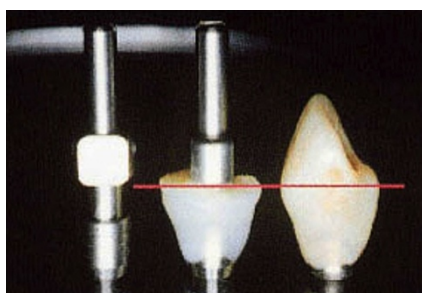
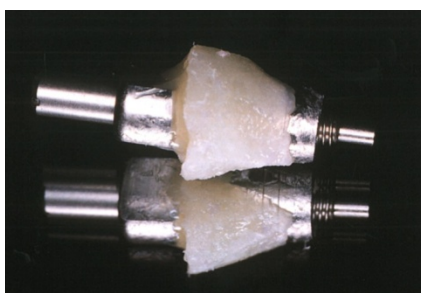
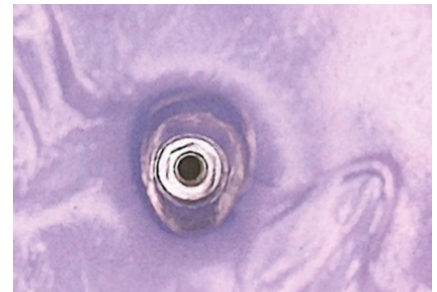


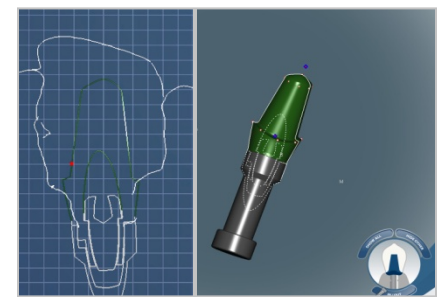
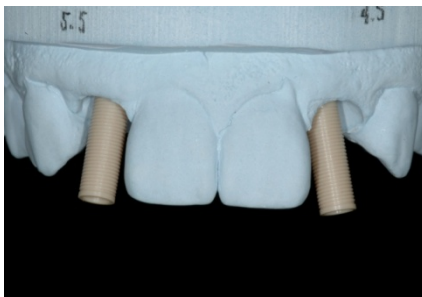
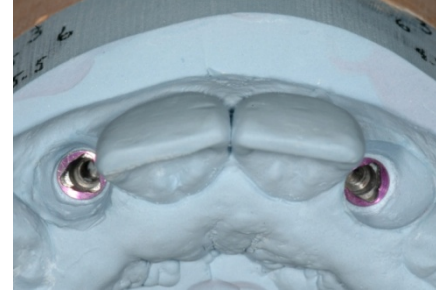


Optimizing Esthetics through Soft Tissue Management utilizing Provisional Restorations and Custom Abutments





Optimizing Esthetics through Soft Tissue Management utilizing Provisional Restorations and Custom Abutments



NOTE: The use of new implant replicas and impression copings are recommended. If non-new implant replicas or impression copings are used, it is necessary to inspect under loupes/microscope for damage (scratches, defects or any other foreign material on the surface). Worn or damaged implant replicas or impression copings will result in improper seating of impression coping and thus the